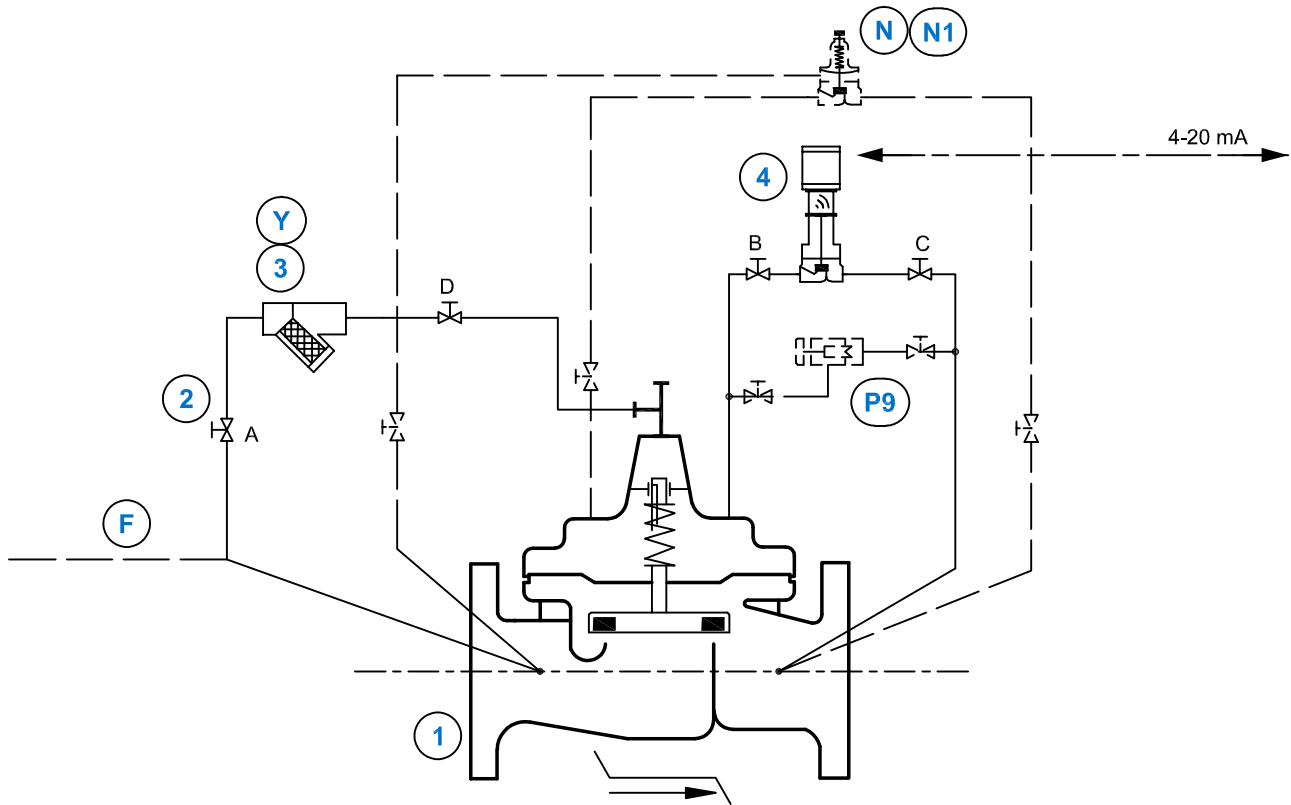


(HS)



### STANDARD EQUIPMENT

No	Description	Qty	Type
1	MAIN VALVE HYTROL/X743 AE/GE/NGE	1	100-01/X743
2	ISOLATION BALL VALVE	4	RB-117
3	STRAINER	1	X43
4	POSITION CONTROL ACTUATED	1	GPC-34 #

### OPTIONAL FEATURES

No	Description	Qty	Type
F	REMOTE SENSING	1	-
N	UPSTREAM SURGE CONTROL (DRAIN TO ATMOSPHERE)	1	CRL
N1	UPSTREAM SURGE CONTROL	1	CRL
P9	MANUAL POSITION CONTROL	1	MPC
Y	HIGH CAPACITY STRAINER	1	X43/80-EP

### NOTES

AE/GE : DN 32 - DN 400 / NGE : DN 50 - DN 600

(#) = According to valve size this feature type could change  
Wiring Sshematic: PCM340

OPTIONAL FEATURES : \_\_\_\_\_  
NOT FURNISHED BY CLA-VAL : \_\_\_\_\_