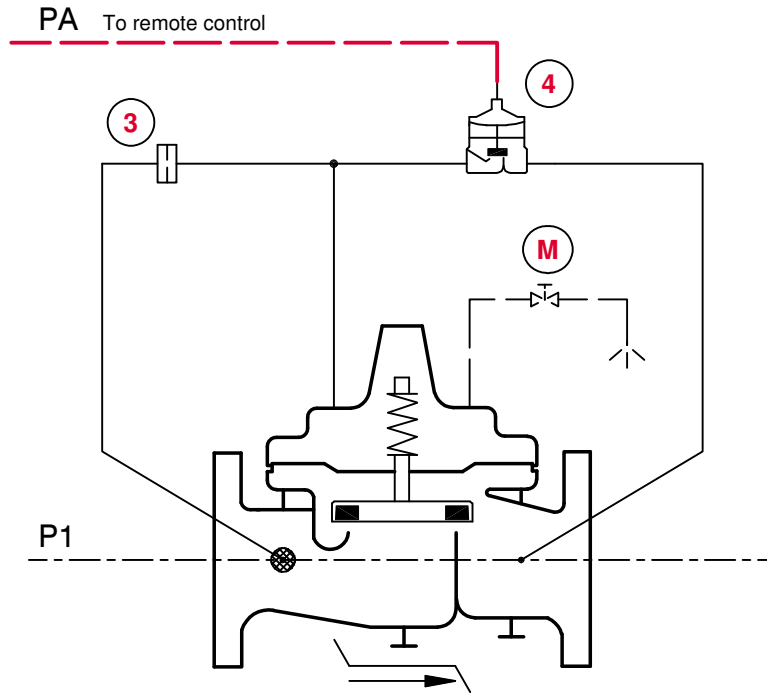


$$PA > 0,5 + \frac{P1}{20} \text{ bar}$$



STANDARD EQUIPMENT

No	Description	Qty	Type
1	MAIN VALVE HYTROL-DELUGE AE/GE/NGE	1	100-01G
2	FLOW CLEAN STRAINER	1	X46A
3	RESTRICTION ASSEMBLY	1	X58C-CSA
4	AUXILIARY VALVE	1	102F/X103

OPTIONAL FEATURES

No	Description	Qty	Type
M	MANUAL OPERATOR	1	RB-117

NOTES

AE/GE : DN 32 - DN 400 / NGE : DN 50 - DN 600
 (#) = According to valve size this feature type could change

OPTIONAL FEATURES : _____
 NOT FURNISHED BY CLA-VAL : _____