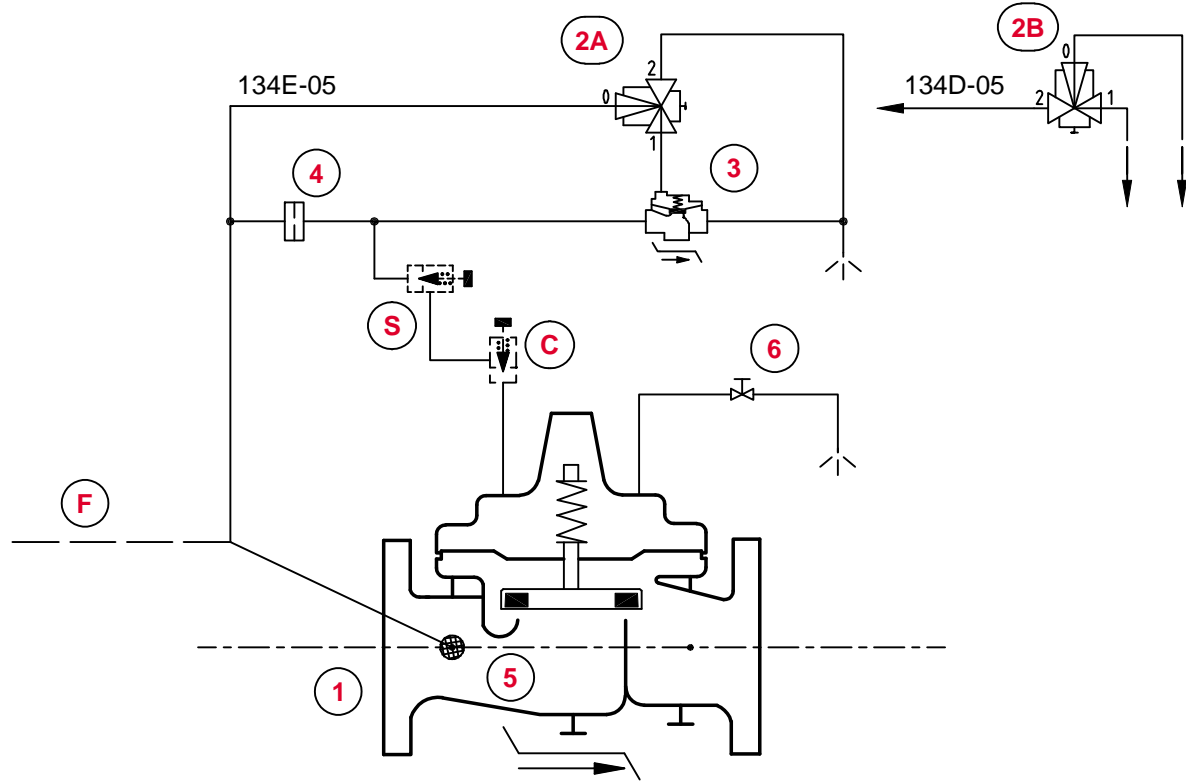




CLA-VAL 134E/D-05

Solenoid Control Valve 3" - 10"
(for Fire Deluge Service)



UL Listed : DN 80 (3") - DN 250 (10")

STANDARD EQUIPMENT

| No | Description | Qty | Type |
|----|------------------------------------|-----|----------|
| 1 | MAIN VALVE HYTROL-DELUGE AE/GE/NGE | 1 | 100-01G |
| 2A | 3-WAY SOLENOID VALVE (NO) | 1 | 311-D |
| 2B | 3-WAY SOLENOID VALVE (NC) | 1 | 311-C |
| 3 | AUXILIARY VALVE HYTROL | 1 | 100-01 |
| 4 | RESTRICTION ASSEMBLY | 1 | X58C-CSA |
| 5 | FLOW CLEAN STRAINER | 1 | X46A |
| 6 | ISOLATION BALL VALVE | 1 | RB-117 |

OPTIONAL FEATURES

| No | Description | Qty | Type |
|----|--------------------------------------|-----|------|
| C | ONE-WAY FLOW CONTROL (CLOSING SPEED) | 1 | CV |
| F | REMOTE SENSING | 1 | - |
| S | ONE-WAY FLOW CONTROL (OPENING SPEED) | 1 | CV |

NOTES

AE/GE : DN 50 - DN 250
(#) = According to valve size this feature type could change

OPTIONAL FEATURES : _____
NOT FURNISHED BY CLA-VAL : _____