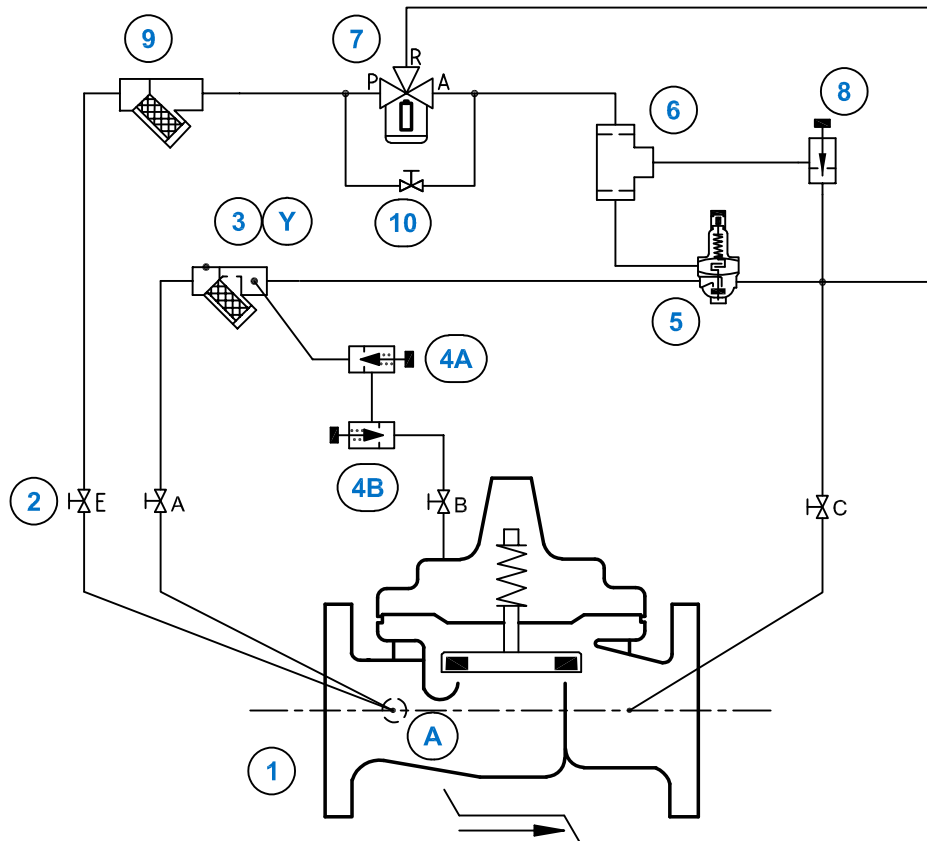


Dual Stage Pressure Modulation Control Valve e-Timer Autonomous Electronic Controller



STANDARD EQUIPMENT

No	Description	Qty	Type
1	MAIN VALVE HYTROL AE/GE/NGE	1	100-01
2	ISOLATION BALL VALVE	4	RB-117
3	STRAINER WITH INCORPORATED ORIFICE	1	X44-A
4	ONE-WAY FLOW CONTROL	2	CV
5	MODULATION CONTROL	1	CPM-A
6	RESTRICTION ASSEMBLY	1	X58A/KX**
7	ELECTRONIC AUTONOMOUS CONTROLLER	1	E-TIMER-33
8	NEEDLE VALVE	1	6120
9	STRAINER	1	X43
10	ISOLATION BALL VALVE (NORMALLY CLOSED)	1	RB-117

OPTIONAL FEATURES

No	Description	Qty	Type
A	FLOW CLEAN STRAINER	1	X46A
Y	HIGH CAPACITY STRAINER	1	X43-80/EP

NOTES

AE/GE : DN 32 - DN 400 / NGE : DN 50 - DN 600

(1) 100-01 * :

AE/GE DN 50 - DN 100 / NGE DN 65 - DN 150 : 100-LFS

AE/GE DN 150 - DN 400 / NGE DN 200 - DN 600 : 100-01

(6) X58A/KX ** : 58846

OPTIONAL FEATURES : _____

NOT FURNISHED BY CLA-VAL : _____